

Town of Northfield Open Space & Recreation Plan 2019-2020

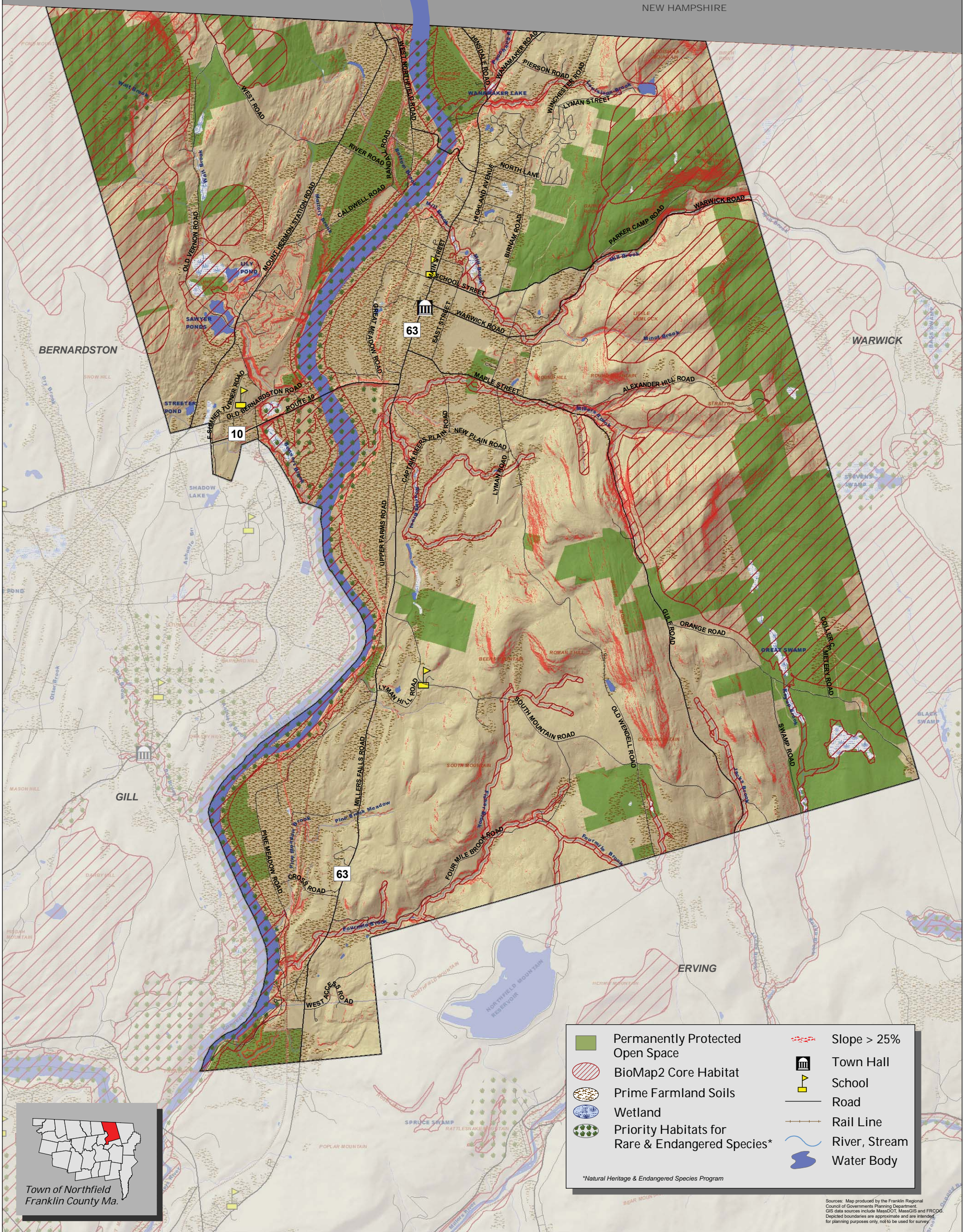
Regional Context Map

0 0.5 1 Miles

Franklin Regional Council of Governments

VERMONT

NEW HAMPSHIRE

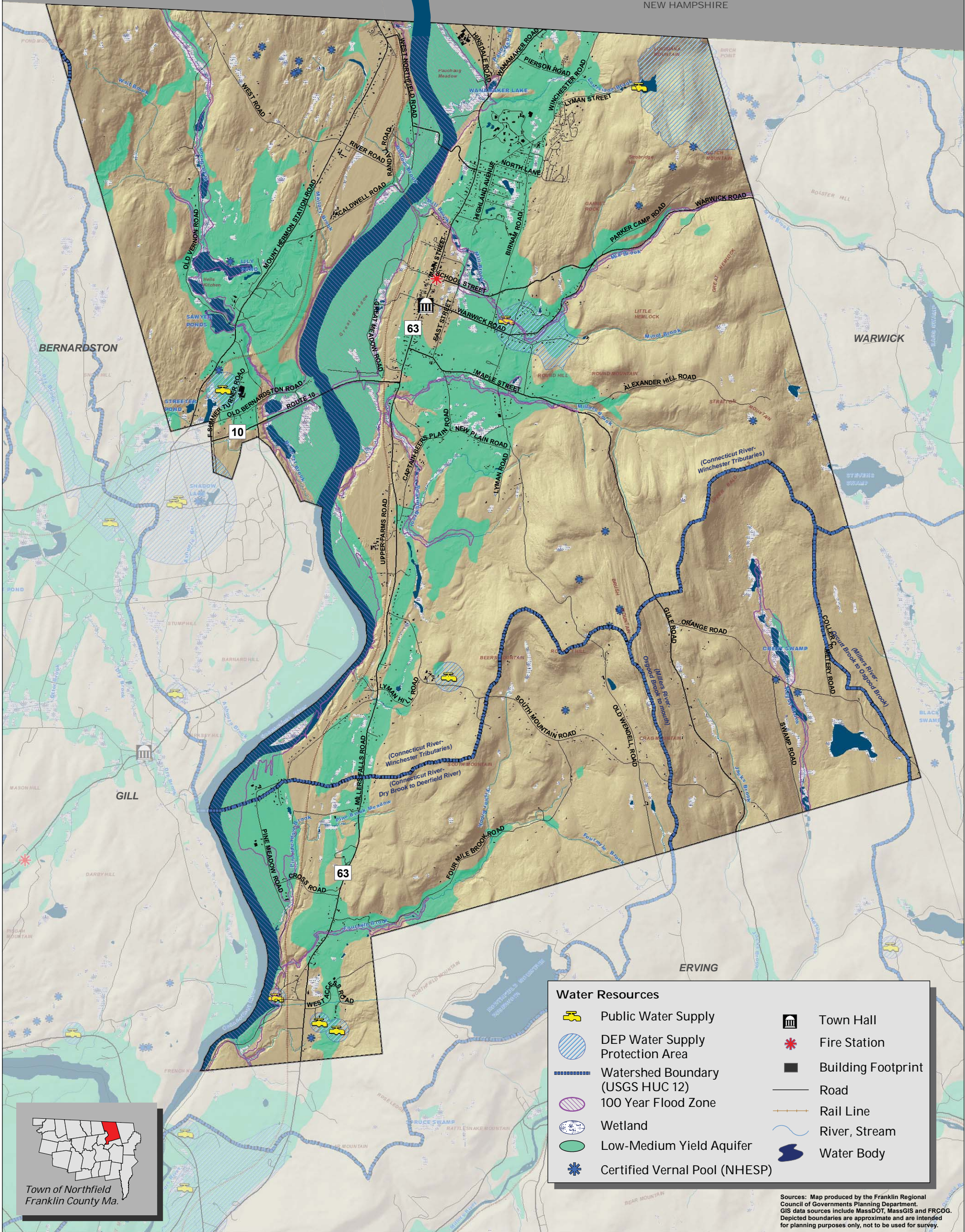


Town of Northfield Soils & Environmental Constraints

Open Space & Recreation Plan 2019-2020

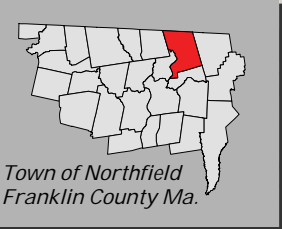
VERMONT

NEW HAMPSHIRE



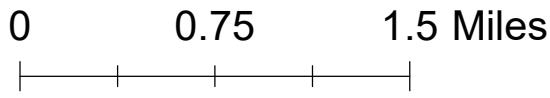
Water Resources	
	Public Water Supply
	DEP Water Supply Protection Area
	Watershed Boundary (USGS HUC 12)
	100 Year Flood Zone
	Wetland
	Low-Medium Yield Aquifer
	Certified Vernal Pool (NHESP)
	Town Hall
	Fire Station
	Building Footprint
	Road
	Rail Line
	River, Stream
	Water Body

Sources: Map produced by the Franklin Regional Council of Governments Planning Department. GIS data sources include MassDOT, MassGIS and FRCOG. Depicted boundaries are approximate and are intended for planning purposes only, not to be used for survey.



Town of Northfield Open Space & Recreation Plan 2019-2020

Water Resources

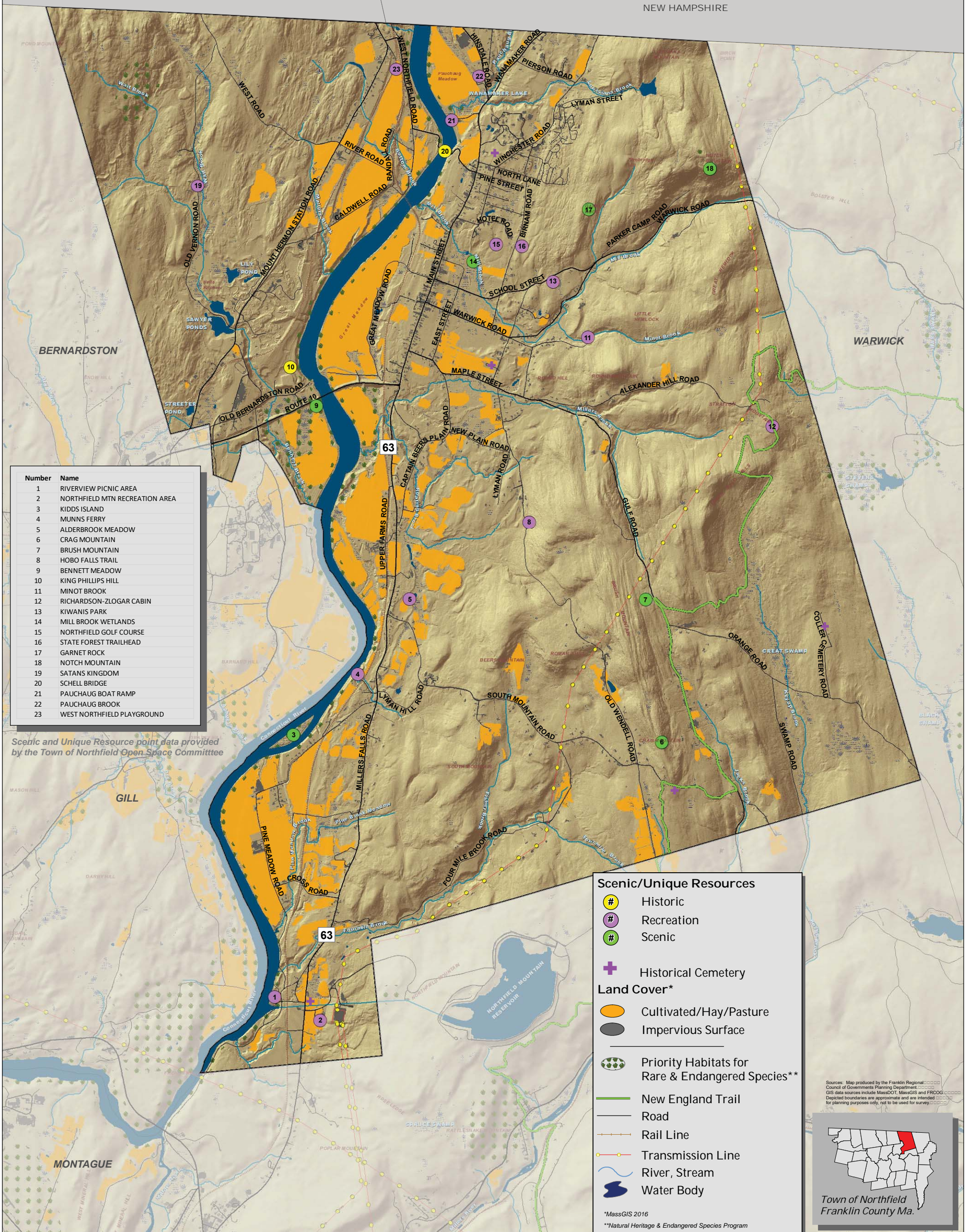


January 10, 2020



VERMONT

NEW HAMPSHIRE



Number	Name
1	RIVERVIEW PICNIC AREA
2	NORTHFIELD MTN RECREATION AREA
3	KIDDS ISLAND
4	MUNNS FERRY
5	ALDERBROOK MEADOW
6	CRAG MOUNTAIN
7	BRUSH MOUNTAIN
8	HOBO FALLS TRAIL
9	BENNETT MEADOW
10	KING PHILLIPS HILL
11	MINOT BROOK
12	RICHARDSON-ZLOGAR CABIN
13	KIWANIS PARK
14	MILL BROOK WETLANDS
15	NORTHFIELD GOLF COURSE
16	STATE FOREST TRAILHEAD
17	GARNET ROCK
18	NOTCH MOUNTAIN
19	SATANS KINGDOM
20	SHELL BRIDGE
21	PAUCHAUG BOAT RAMP
22	PAUCHAUG BROOK
23	WEST NORTHFIELD PLAYGROUND

Scenic and Unique Resource point data provided by the Town of Northfield Open Space Committee

Scenic/Unique Resources

- # Historic
- # Recreation
- # Scenic
- + Historical Cemetery

Land Cover*

- Orange Cultivated/Hay/Pasture
- Grey Impervious Surface

Priority Habitats for Rare & Endangered Species**

- Green Priority Habitats for Rare & Endangered Species**

Infrastructure

- Black Road
- Black with cross-ticks Rail Line
- Red with cross-ticks Transmission Line
- Blue River, Stream
- Dark Blue Water Body

*MassGIS 2016
**Natural Heritage & Endangered Species Program

Sources: Map produced by the Franklin Regional Council of Governments Planning Department. GIS data sources include MassDOT, MassGIS and FRCOG. Depicted boundaries are approximate and are intended for planning purposes only, not to be used for survey.

Town of Northfield
Franklin County Ma.

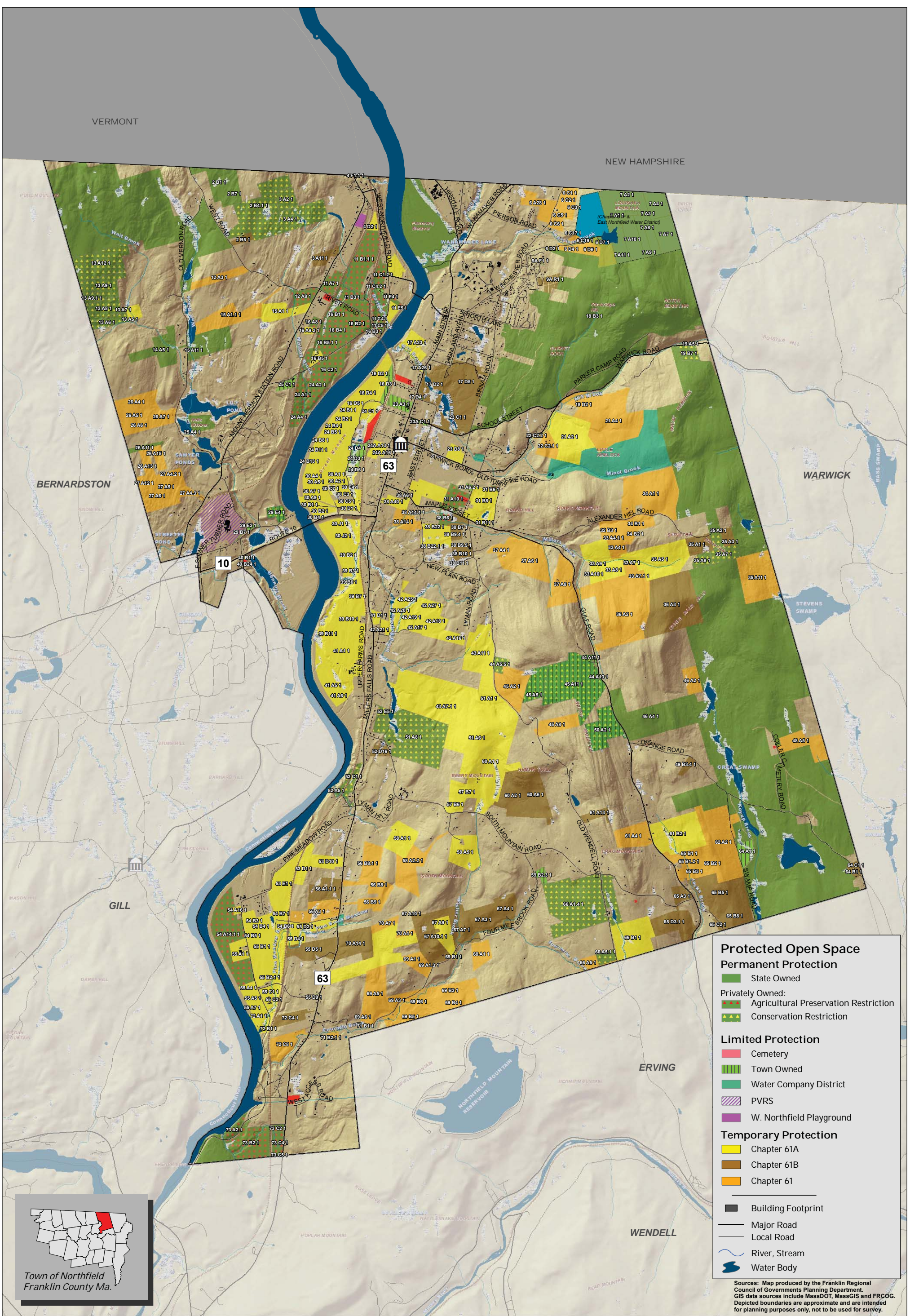
Town of Northfield Open Space & Recreation Plan 2019-2020

Scenic Resources & Unique Environments

0 0.75 1.5 Miles

VERMONT

NEW HAMPSHIRE



Protected Open Space

Permanent Protection

- State Owned
- Privately Owned:
 - Agricultural Preservation Restriction
 - Conservation Restriction

Limited Protection

- Cemetery
- Town Owned
- Water Company District
- PVRs
- W. Northfield Playground

Temporary Protection

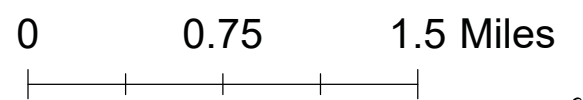
- Chapter 61A
- Chapter 61B
- Chapter 61

Building Footprint
 Major Road
 Local Road
 River, Stream
 Water Body

Sources: Map produced by the Franklin Regional Council of Governments Planning Department. GIS data sources include MassDOT, MassGIS and FRCOG. Depicted boundaries are approximate and are intended for planning purposes only, not to be used for survey.

Town of Northfield Open Space & Recreation Plan 2019-2020

Open Space



September 2020



Post updated trail maps, opportunities for stewardship volunteers, and educational events on Nextdoor or local forums.

Continue to prioritize chapter 61 areas for the town to preserve should the land be removed from chapter 61.

Help provide land protection and estate planning information to landowners in the region.

Improve the shoreline access just north of the boat ramp at Pauchaug Brook for kayak/canoe launching.

Build a path connecting Schell Bridge to Pauchaug Boat Ramp

Maintain the Mill Brook trail, repairing stream and wetland crossings, and manage for invasive species.

Build a canoe/kayak launch at Bennett Meadows Wildlife Management Area.

Promote the Pioneer Valley Regional School Land Management Plan that encourages conservation, open-air educational options, and recreation on the school's land.

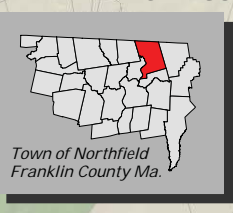
Propose accessible river-front walkways and river-viewing stations.

Increase access for swimming in the Connecticut River, working toward a riverside park.

Maintain the printed Northfield Trails brochure and the Northfield Trails website.

- Work on protecting areas identified by residents and/or BioMap2/ the Northfield Greenprint as high priority.
1. Mill Brook area.
 2. Crag Mountain; access to the New England National Scenic Trail.
 3. Any areas along the river that become available.
 4. Any land along Louisiana Brook that becomes available.
 5. Beers Mountain historic/ scenic viewpoint area.
 6. Bald Hills Area; ecologically important as wildlife corridor, scenic views.

	Permanently Protected Open Space
	Pioneer Valley Regional High School Property
	Major Road
	Local Road
	Rail Line
	River, Stream
	Water Body



Town of Northfield Open Space & Recreation Plan 2019-2020

Action Plan Map

